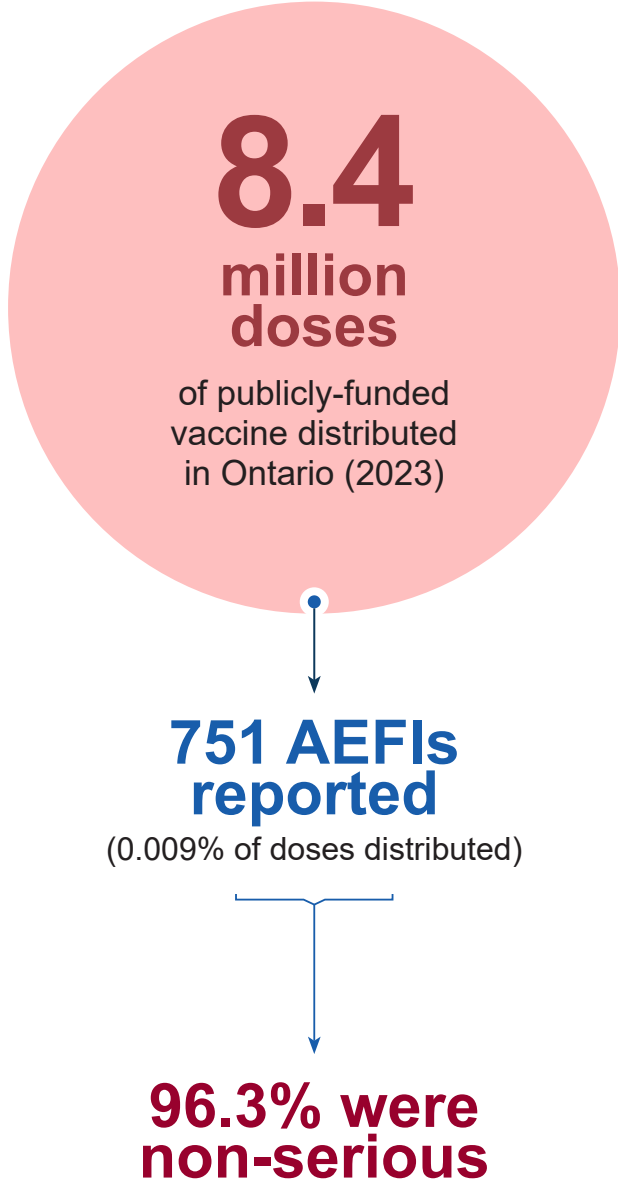


Vaccine Safety in Ontario

This infographic provides a summary of AEFIs reported in Ontario following vaccines administered in 2023. This does not include data on COVID-19 vaccine AEFIs.

Vaccines are very safe

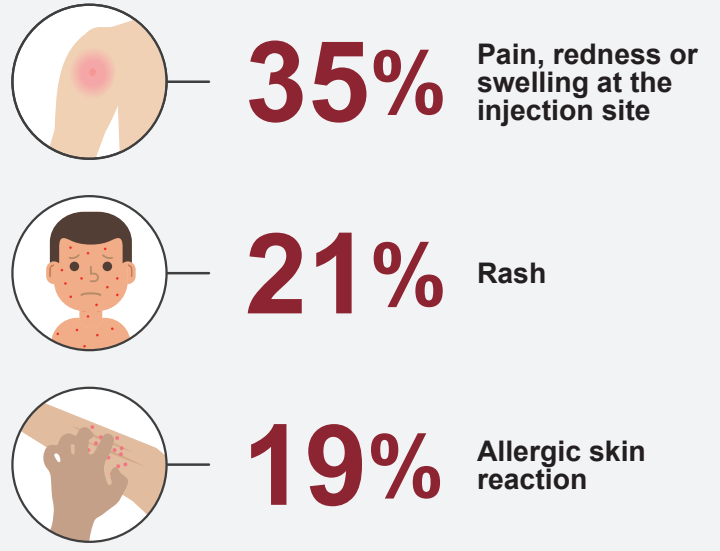
As a key component of vaccine safety, Ontario ensures ongoing monitoring of vaccine safety data in collaboration with local, provincial, territorial, and national partners.



What is an adverse event?

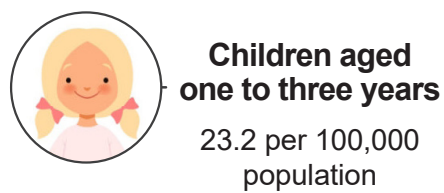
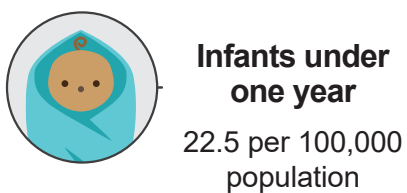
An adverse event following immunization (AEFI) is an unwanted or unexpected health effect that happens after someone receives a vaccine, which may or may not be caused by the vaccine.

Most frequently reported adverse events were:



Age distribution

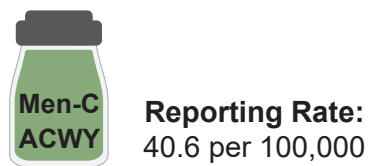
Infants under one year and children aged one to three years had the highest AEFI reporting rates. The likely explanation is the relatively high number of vaccines given to children under 4 years, which creates more opportunities for AEFIs to occur and to be reported to a health care provider.



Vaccines

The highest AEFI reporting rates by doses distributed were in quadrivalent conjugate meningococcal (Men-C-ACWY), recombinant zoster vaccine (RZV) and human papillomavirus (HPV9).

Higher vaccine-specific AEFI reporting rates can be associated with factors such as the population being vaccinated, characteristics of the vaccine (e.g., increased reactogenicity), and setting of vaccine administration (e.g., school-based vaccines with increased opportunities for reporting).



Although Influenza vaccine had the highest number of AEFI reports (177), it had the lowest reporting rate (4.7 per 100,000 doses distributed).



Immunization lowers the risk of getting and spreading vaccine-preventable diseases to others.

Vaccination can prevent illness, including acute severe illness, hospitalization and death, as well as serious and long-term complications from vaccine-preventable diseases.

How to report an AEFI



Vaccine recipients can report AEFIs to their health care provider or local public health unit. Physicians and other health care providers are required to report AEFIs to their local public health unit.

For more information on how to report an AEFI, please see [AEFI reporting for Health Care Providers in Ontario](#).

For more information on vaccine safety data in Ontario, please refer to the **Immunization Data Tool** at publichealthontario.ca/vaccinesafety

For more information on AEFIs reported for COVID-19 vaccines, please see the surveillance report on [AEFIs for COVID-19 in Ontario](#)