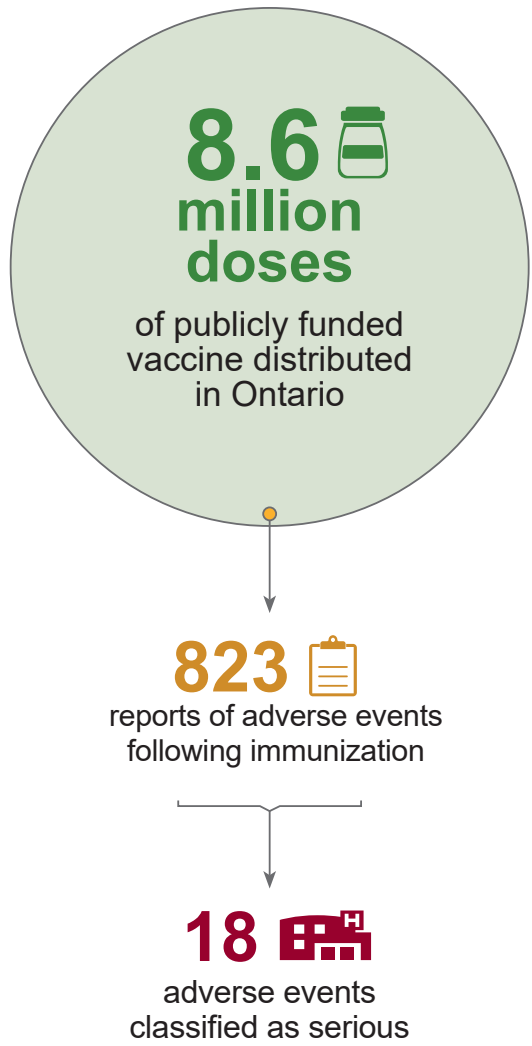


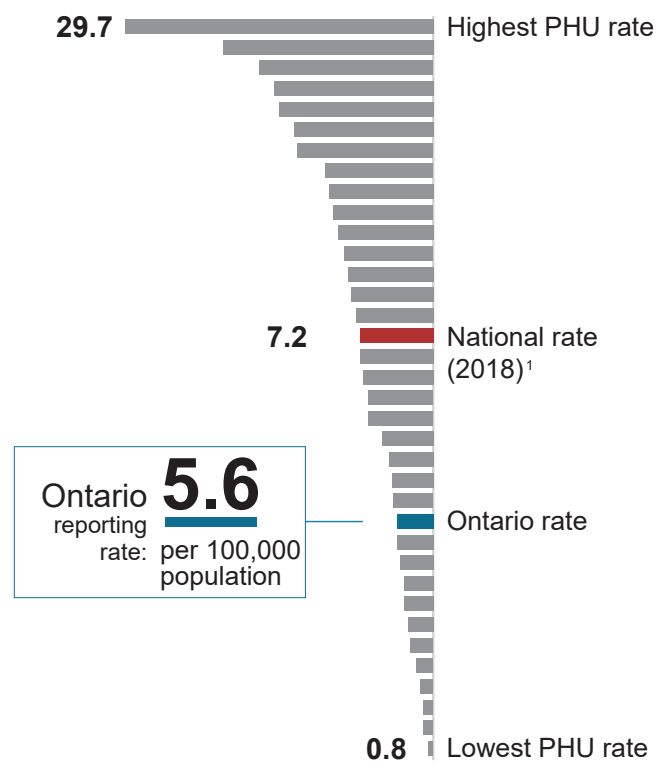
# Vaccine Safety in Ontario 2019

Ongoing surveillance of adverse events following immunization (AEFI) is essential for monitoring vaccine safety and maintaining confidence in immunization programs.

The following is a summary of AEFIs reported in Ontario following vaccines administered in 2019.



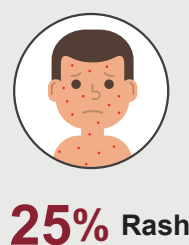
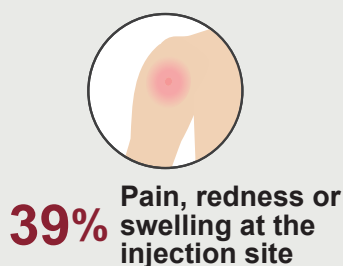
There was a wide variation in AEFI reporting rates among public health units (PHUs) ranging from 0.8 to 29.7 per 100,000 population.



## Types of adverse events

Most reported adverse events were mild.

Among reports of AEFIs, the most frequently reported reactions were:



## Age and sex distribution

Persons with AEFI reports ranged in age from 1 month to 98 years, with a median age of 31 years. The highest AEFI reporting rates were among **infants under one year and children aged one to three years**.



**Infants under one year**  
28.6 per 100,000 population



**Children aged one to three years**  
28.1 per 100,000 population

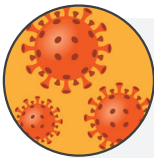
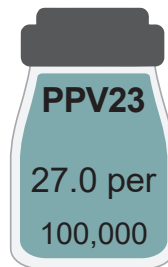
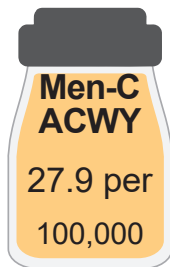
**Female predominance was observed in AEFI reports**



**64%** occurred among females

## Vaccines

The **highest AEFI reporting rates** by doses distributed (publicly funded vaccines) were observed among:



Although Influenza vaccine was associated with the **highest number of AEFI reports** (228), it had the **second lowest reporting rate** (5.8 per 100,000 doses distributed) due to the high volume of doses distributed for this vaccine.



Recombinant zoster vaccine (RZV) accounted for 13% of AEFI reports.

The most frequently reported reaction associated with RZV was **pain, redness or swelling at the injection site** (59%).

## Reporting Source



**Physicians and other health care providers** reported the majority of AEFIs (69%).

Family member and self-reports accounted for 24% of AEFI reports.